



SAFE WATER
P R O D U C T S



ANTI-LEGIONELLA – OUTBREAK PROTECTION

Protect your patients, staff and bottom-line
with Safe Water Products

SWP International bvba

 Schaperstraat 12, Scheldewindeke, Belgium  +32474123258

 info@safewaterproducts.com  www.safewaterproducts.com



SS-881 Max (W)

Inline-Safe Max White

SS-881 Max (C)

Inline-Safe Max Chrome

SS-882 Max (W)

Inline-Safe Max White

SS-882 Max (C)

Inline-Safe Max Chrome



For use as a rain shower coming from above or from a wall.
Flexible shower rose with easy clean nozzles and strong flow.



SS-883 (C)

Inline-Safe Chrome

SS-883+ (W)

Inline-Safe Plus White

SS-883+ (C)

Inline-Safe Plus Chrome

SWP International bvba

 Schaperstraat 12, Scheldewindeke, Belgium  +32474123258

 info@safewaterproducts.com  www.safewaterproducts.com



SS-884 (C)

Rada-Safe Chrome

SS-884 Plus

Rada-Safe Plus

Long life solution for the Rada VR105, VR106, VR125 & VR145 Shower products.



Rada VR Range

VR-888 (FH)



Rada-Safe adapter



VR-888 (FH) can be added to the Rada-VR Range to make a long lasting Rada-Safe 20,000 liters.

SS-885 (C)

Tap-Safe Chrome



SS-886 (W)

Shower-Safe White

SS-886 (C)

Shower-Safe Chrome

SS-886+ (W)

Shower-Safe Plus White

SS-886+ (C)

Shower-Safe Plus Chrome

SS-886+ (B)

Shower-Safe Plus Black



SWP International bvba

 Schaperstraat 12, Scheldewindeke, Belgium  +32474123258

 info@safewaterproducts.com  www.safewaterproducts.com

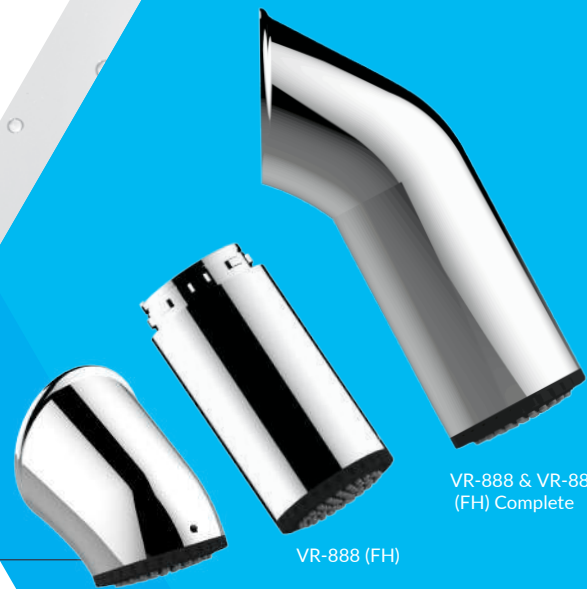


SS-887
Kitchen-Safe

VR-888 & VR-888 (FH)

Wall-Shower-Safe

Vandal resistant and ligature proof heavy duty wall shower, future proofed for legionella outbreaks.



VR-888 Base

VR-888 (FH)

VR-888 & VR-888
(FH) Complete

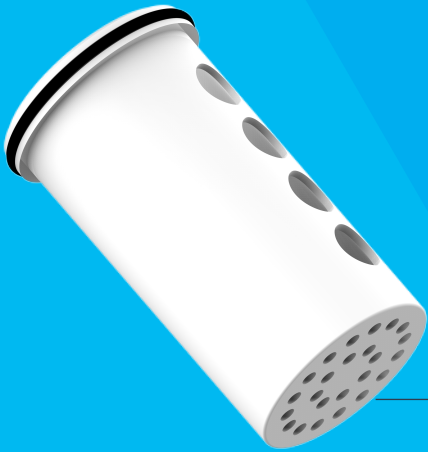


SWP-7210
Water Filter Pitcher

SWP International bvba

 Schaperstraat 12, Scheldewindeke, Belgium  +32474123258

 info@safewaterproducts.com  www.safewaterproducts.com



SS-1+
SS-1 Plus



SS-2 (W)
SS-2 White

SS-2 (C)
SS-2 Chrome



SS-2 (R)
SS-2 Rada

SWP International bvba

 Schaperstraat 12, Scheldewindeke, Belgium  +32474123258

 info@safewaterproducts.com  www.safewaterproducts.com



SS-2+ Dummy
SS-2 Plus Dummy



SS-2+
SS-2 Plus



SS-3
SS-3



SS-2 Plus KS Dummy
SS-2 Plus KS Dummy



SS-2 Plus KS
SS-2 Plus KS

Industries where the water filters may be used



HOSPITALS



HOTELS



NURSING HOMES



SCHOOL CAMPUSES



MARITIME



OFFSHORE

Benefits



Long Lifespan

> 5,000-20,000 Litres



Reusable

Easy exchange of filters



Lab Tested & Certified

> Log 7 bacteria reduction



Ultrafiltration bacteria

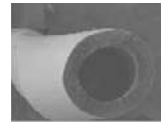
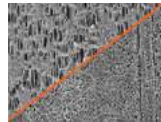
Pore size smaller than all bacteria



Cost Effective

Lasts longer than competitors' products

Filter Technology



The filter material prevents organic and inorganic contaminants down to 0.15 microns. Note the more consistent holes in our membrane material.

Water penetrates from the outside (left hand side) to the inside (right hand side) and passes through a multitude of ever increasing pore sizes thus encouraging fluid flow.

Each fiber end is terminated in sealant within the filter housing thus preventing the buildup of bacteria if present from passing through the fiber wall into the main outflow.

Hundreds of fibres terminating in the filter housing. Although tightly packed, each fibre is unrestricted, thus allowing a high flow rate with minimal pressure drop.

The filter technology ensure a strong flow of filtered water. Good design together with high quality filter material results in a more efficient safe water experience.

Compliance

NSF-WRC – Filter material and housings meet NSF-WRC standards.



IMSL – Industrial Microbiological Services Ltd. Tested the products and determined that no legionella bacteria could pass the filters.



Kiwa BRL-K1410 – Certifies that our products are made from the safest of materials, comply with 100% Quality Control checks & the filters are laboratory tested to ensure effectiveness.



AIM – Tests indicate that the SWP membranes can reduce the number of Legionella Pneumophila by at least 7 Logs.



Nelson Labs – The test procedure complies with the key aspects of ASTM F838.



Data Sheet Shower-Safe

Technology Hollow Fiber Membrane

Performance ¹:	Rated Capacity Life Time	5,000-20,000 Litres (approximately 160-640 showers) Several months depending on water quality and usage 6 l/m at 2 bar
	Flow Rate	
Compliance:	Biological Retention Mechanical Effects Material Safety Structural Integrity Ultrafiltration	> Log 7 Turbidity reduction Extraction tests Hydrostatic pressure 8 bar Meets EPA criterion
Operating conditions:	Max operating pressure Operating temperature	6 bar Min. 0°C, Max. 50°C
	Replacement interval	Several months depending on water quality and usage
	Chlorine exposure	100 ppm

1. Product performance is dependent on quality of incoming water.

SWP International bvba

📍 Schaperstraat 12, Scheldewindeke, Belgium 📞 +32474123258

✉ info@safewaterproducts.com 🌐 www.safewaterproducts.com